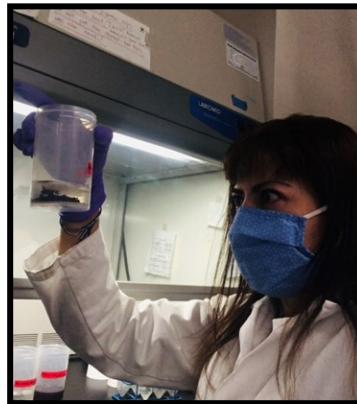


WATER PROTECTORS IN THE FIELD

Environmental Engineer - Ruby Diaz



Ruby Diaz is an Environmental Engineer who works for Carollo Engineers, where she manages projects and studies microorganisms that can break down toxins and pollution.

Ruby's favorite part of her job is getting to work on a lot of different projects.

Being an Environmental Engineer requires at least a bachelor's degree in engineering and passing a test to get a Professional Engineer (PE) license.

You can help Ruby protect water by being careful what chemicals you use at home and making sure they don't get out into the environment.

A Day On The Job

- 7:00 AM** *Get up and eat breakfast*
- 8:30 AM** *Drive to work*
- 9:00 AM** *Arrive at work and get ready for the lab*
- 9:30 AM** *Work in the lab*
- 12:00 PM** *Take a break for lunch*
- 1:00 PM** *Write reports and attend a meeting about a new project*
- 5:00 PM** *Get off work and head home*
- 6:00 PM** *Eat dinner and study for a PhD*
- 10:00 PM** *Go to bed*